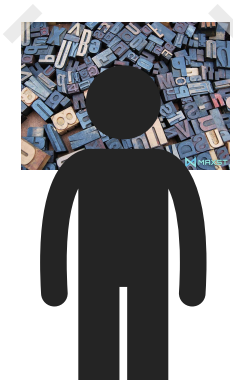


Instructions

Use the MAXST Wearable Calibration so that the apps made with MAXST AR SDK can be optimized for smart glasses. After the calibration process, you can see objects in a more precise position.

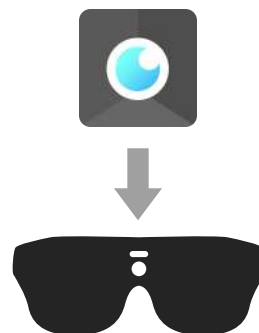
01 / Print The Target Image

1. Print out the attached image. Make sure to print at 100% scale.
2. Tape the image to a vertical surface at eye level.
3. Bumps on the surface may bring about distortion. Make sure that the surface is flat.



02 / Download The APK

1. MAXST Wearable Calibration is designed to work on Android-based smart glasses.
2. Download the apk file. (<https://developer.maxst.com/MD/download/cali>)
3. Install the apk file on your smart glasses and launch the app.



03 / Calibrate The Device

1. Create a new profile.
2. Follow the instructions that will guide you through the process. You'll be aligning the rectangle to the edges of the image with one eye closed, 3 times for each eye, stepping back and forth.



3. We recommend every user have his/her own calibration profile.



Target Image for MAXST Wearable Calibration